

Fórum de Editores Científicos na Área da Saúde Pública
Abrascão 2006, Rio de Janeiro

***Revisão por pares e outras questões -
uma olhada no International Journal of
Epidemiology***

Mauricio L. Barreto
Instituto de Saúde Coletiva, UFBA

Membro do Conselho, International Epidemiological Association (IEA)
Editor Associado, Ciência e Saúde Coletiva
Editor Associado, Rev Bras Epidemiology
Editor Associado, Emerging Topics in Epidemiology (online, Biomedcentral)
Consultor Editorial, The Lancet



International Journal of Epidemiology statistics by year of submission

Year	Revising	Awaiting Publication	Published	Rejected	Withdrawn	Total
1995	12	0	170	300		482
1996	10	0	172	310		492
1997	17	0	170	321		508
1998	7	0	157	280		444
1999	10	0	162	343		515
2000	19	0	127	426		572
2001	12	0	114	548	2	676
2002	7	0	128	497	5	637
2003	17	1	123	459	4	604
2004	9	2	111	548	1	671
2005	27	40	68	664	2	801
To 30/6/06	32	9	0	311	1	418*



Impact factor and immediacy index for International Journal of Epidemiology 1994-2005

Year	Impact Factor	Ranking	Immediacy index	Ranking	No. citations
1994	1.285	19/58			
1995	1.324	20/60			
1996	1.557	20/61			
1997	1.630	23/73			
1998	1.618	20/80			
1999	1.974	15/84	0.169	46/84	4832
2000	1.892	22/87	0.255	28/87	5216
2001	1.899	22/88	1.022	4/88	5533
2002	2.368	13/90	1.204	2/90	5842
2003	3.289	7/89	1.376	4/89	6428
2004	3.735	7/93	1.962	2/93	7079
2005	4.045	6/99	1.791	2/99	7599

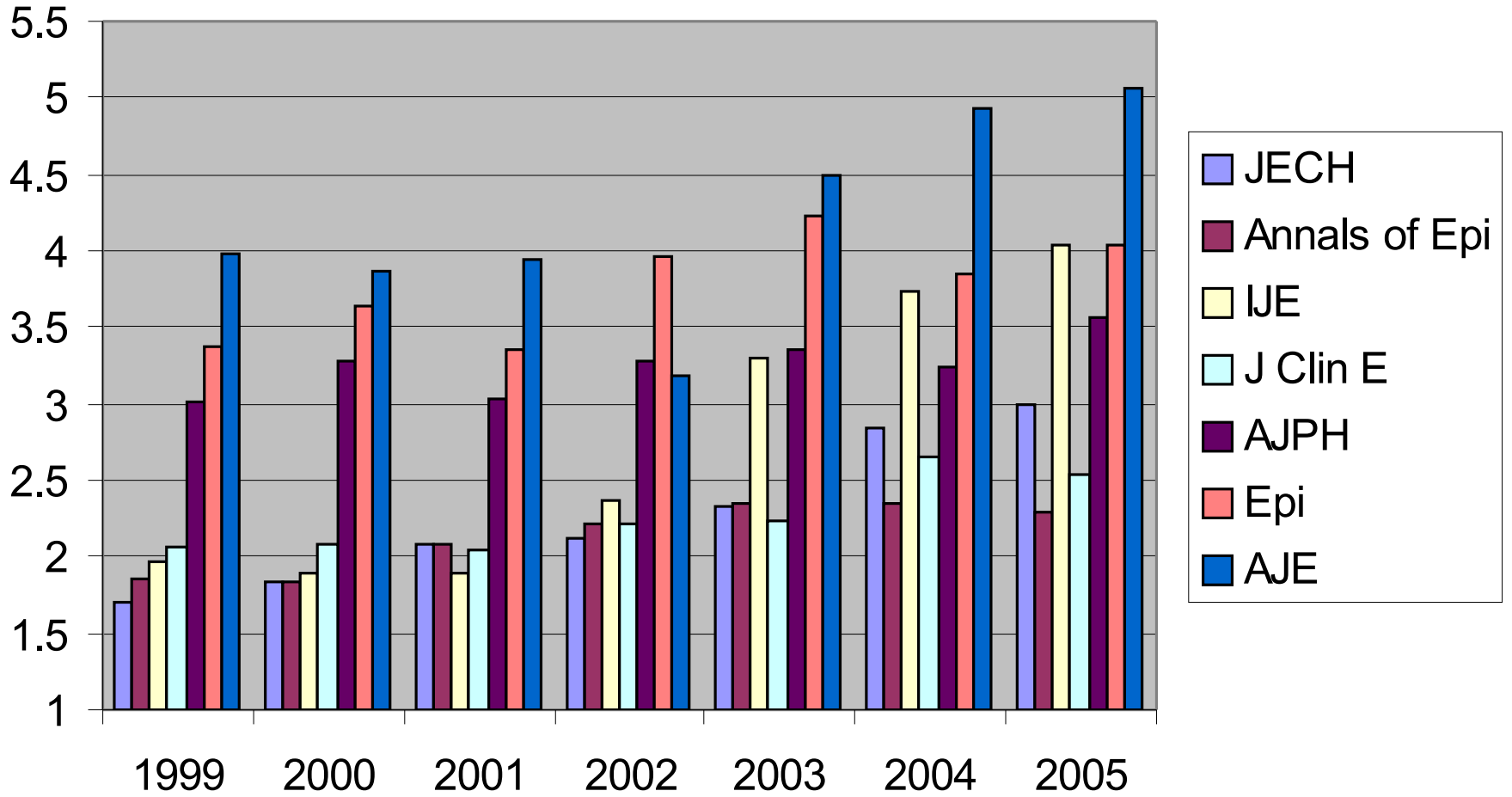


Rank order and impact factor of the top ten titles among 99 public health journals

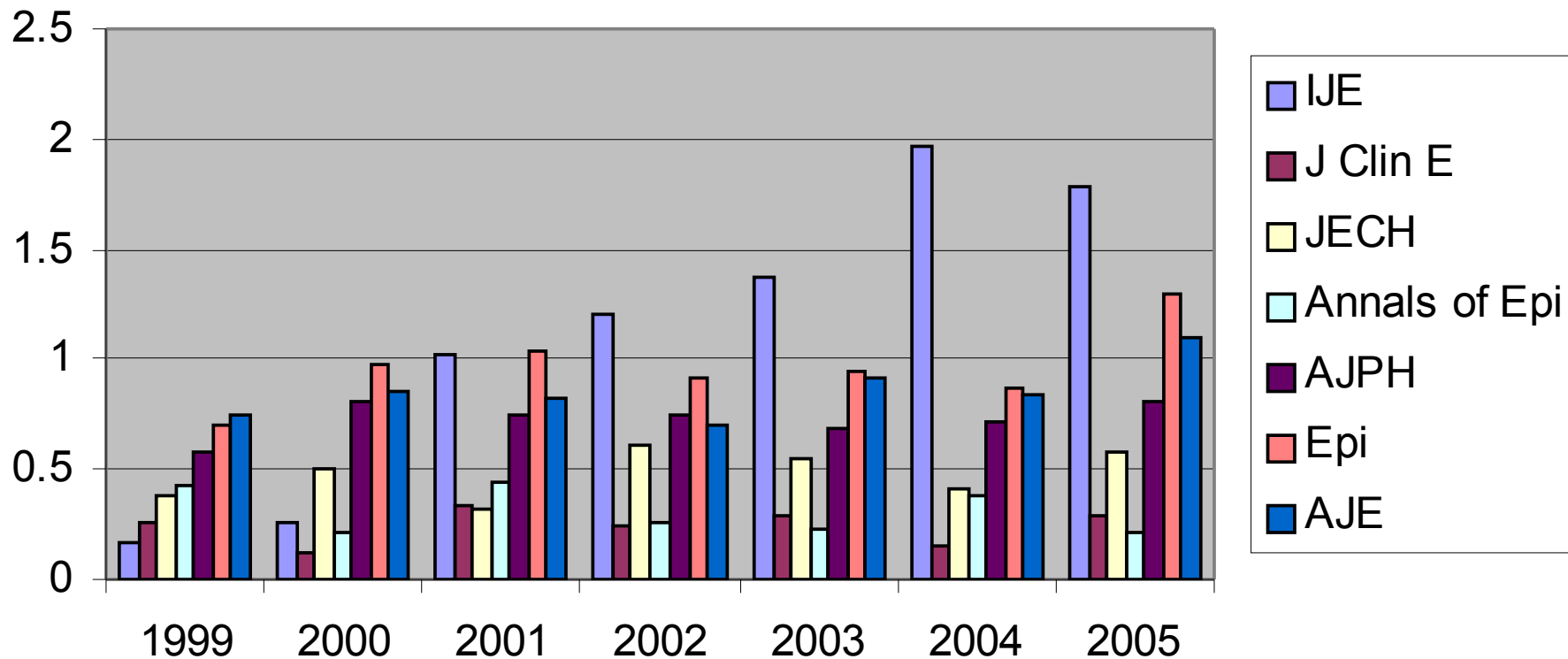
Rank order of journal	Impact factor
1. Environmental Health Perspectives	5.342
2. American J Epidemiology	5.068
3. Genetic Epidemiology	5.064
4. Epidemiol Review	4.722
5. Cancer, Epidemiology & Biomarkers	4.460
6. International J Epidemiology	4.045
7. Epidemiology	4.043
8. WHO Technical Report Series	3.968
9. B. World Health Organ	3.961
10. Annual Reviews of Public Health	3.674



Impact Factor



Immediacy Index



Percentage of material published in Lancet, American Journal of Epidemiology and International Journal of Epidemiology receiving zero citations (total number of articles) and the article with the highest number of citations (in bold), 2003-2005.

Source: Web of Science, accessed 10 August 2006.

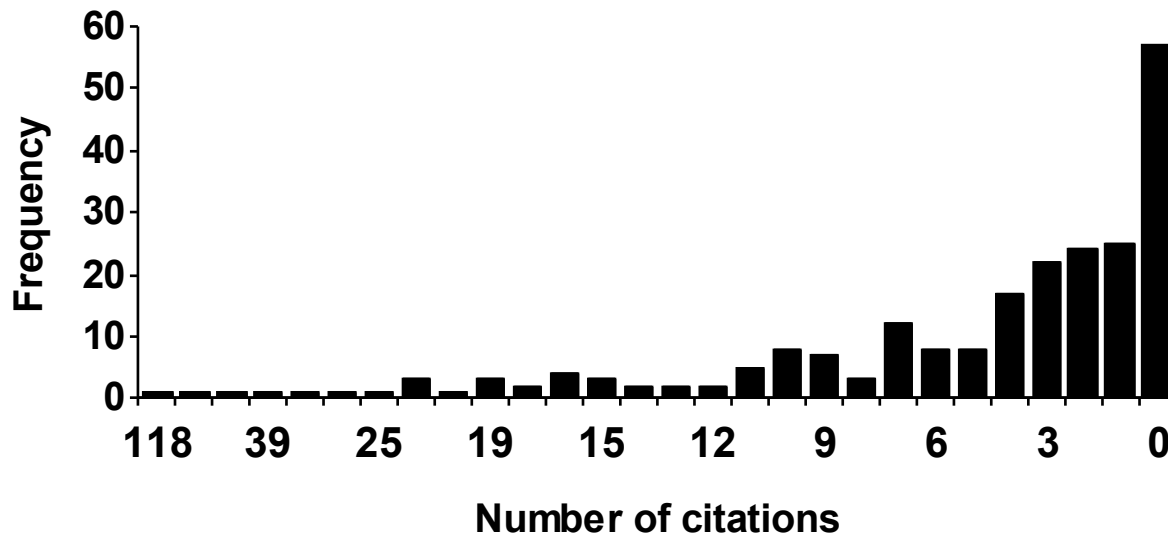
Journal	2003	2004	2005
Lancet	44.5% (2565) 710 cites	48.1% (2027) 304 cites	58.4% (1698) 157 cites
American Journal of Epidemiology	57.5% (768) 69 cites	61.7% (750) 51 cites	75.5% (950) 18 cites
International Journal of Epidemiology	24.7% (226) 118 cites	23.8% (256) 44 cites	38.5% (325) 17 cites



Distribution of citations to articles published in International Journal of Epidemiology in 2003.

Source: Web of Science, Thomson Scientific, accessed 10 August 2006

International Journal of Epidemiology 2003



Rejection Rates, International Journal of Epidemiology, 1993-2005

1993	252/437	=	57.7%
1994	285/442	=	64.5%
1995	300/460	=	65.2%
1996	310/482	=	64.3%
1997	321/491	=	65.4%
1998	280/437	=	64.1%
1999	343/504	=	68.1%
2000	422/546	=	77.3%
2001	548/664	=	82.5%
2002	497/625	=	79.5%
2003	459/583*	=	78.7%
2004	548/659**	=	83.2%
2005	664/766***	=	86.7%



Continent of Origin of Papers (determined by address of Corresponding author)

	1995	1996	1997	1998	1999	2000	2001	2002	2003	2004	2005	2006*
Europe	237 (49.2%)	259 (52.6%)	222 (43.7%)	225 (50.6%)	236 (45.8%)	262 (45.8%)	325 (48.1%)	275 (43.2%)	264 (43.7%)	296 (44.1%)	378 (47.2%)	186 (44.5%)
North America	94 (19.5%)	90 (18.3%)	112 (22.0%)	97 (21.8%)	121 (23.5%)	129 (22.6%)	157 (23.2%)	151 (23.7%)	138 (22.8%)	139 (20.7%)	182 (22.7%)	113 (27.0%)
Asia	80 (16.6%)	88 (17.9%)	107 (21.1%)	73 (16.4%)	104 (20.2%)	120 (21.0%)	124 (18.3%)	134 (21.0%)	130 (21.5%)	127 (18.9%)	127 (15.9%)	73 (17.5%)
Africa	21 (4.4%)	13 (2.6%)	21 (4.1%)	18 (3.4%)	14 (2.7%)	16 (2.8%)	12 (1.8%)	11 (1.7%)	22 (3.6%)	22 (3.3%)	25 (3.1%)	8 (1.9%)
Australasia	24 (5.0%)	19 (3.9%)	24 (4.7%)	13 (2.9%)	18 (3.5%)	19 (3.3%)	33 (4.9%)	35 (5.5%)	23 (3.8%)	54 (8.1%)	60 (7.5%)	23 (5.5%)
Central & South America	26 (5.4%)	23 (4.7%)	22 (4.3%)	19 (4.3%)	22 (4.3%)	26 (4.6%)	25 (3.7%)	31 (4.9%)	27 (4.5%)	33 (4.9%)	29 (3.6%)	15 (3.6%)
All Countries	482 (100%)	492 (100%)	508 (100%)	444 (100%)	515 (100%)	572 (100%)	676 (100%)	637 (100%)	604 (100%)	671 (100%)	801 (100%)	418 (100%)



Mean time (days) taken to notify authors of a decision, International Journal of Epidemiology, 1993-2006

	199	199	199	199	199	199	199	200	200	200	200	200	200	200
Accepted/rejected without review. Time from receipt to notifying decision.	63	52	67	62	67	61	41	28	26	22	18	18	18	18
Returned after review Time from receipt to letter requesting revision or rejecting	82	81	93	86	95	101	90	83	72	75	81	79	79	68



Outcome of papers submitted by continent of origin (determined by country of corresponding author)

	2003				2004			
	Outright Rejections			Rejected with Review	Outright Rejections			Rejected with Review
	Number	% (N) of area submissions		Number (%)	Number	% (N) of area submissions		Number (%)
Europe	150	57%	(264)	42 (37%)	188	64%	(296)	55 (19%)
North America	84	61%	(138)	25 (46%)	75	54%	(139)	23 (17%)
Asia & Middle East	89	68%	(130)	25 (61%)	100	79%	(127)	18 (14%)
Africa	4	18%	(22)	5 (28%)	10	45%	(22)	6 (27%)
Australasia	9	39%	(23)	5 (36%)	35	65%	(54)	7 (13%)
Central & Southern America	16	59%	(27)	5 (45%)	21	64%	(33)	8 (24%)

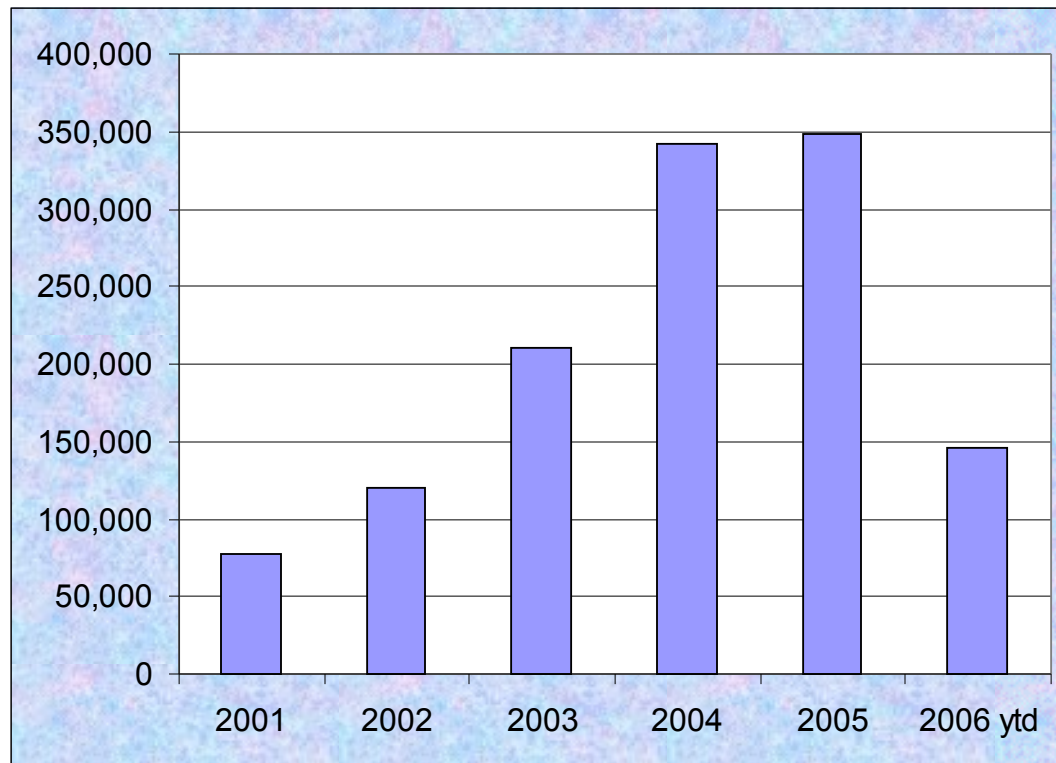


Outcome of papers submitted by continent of origin (determined by country of corresponding author)

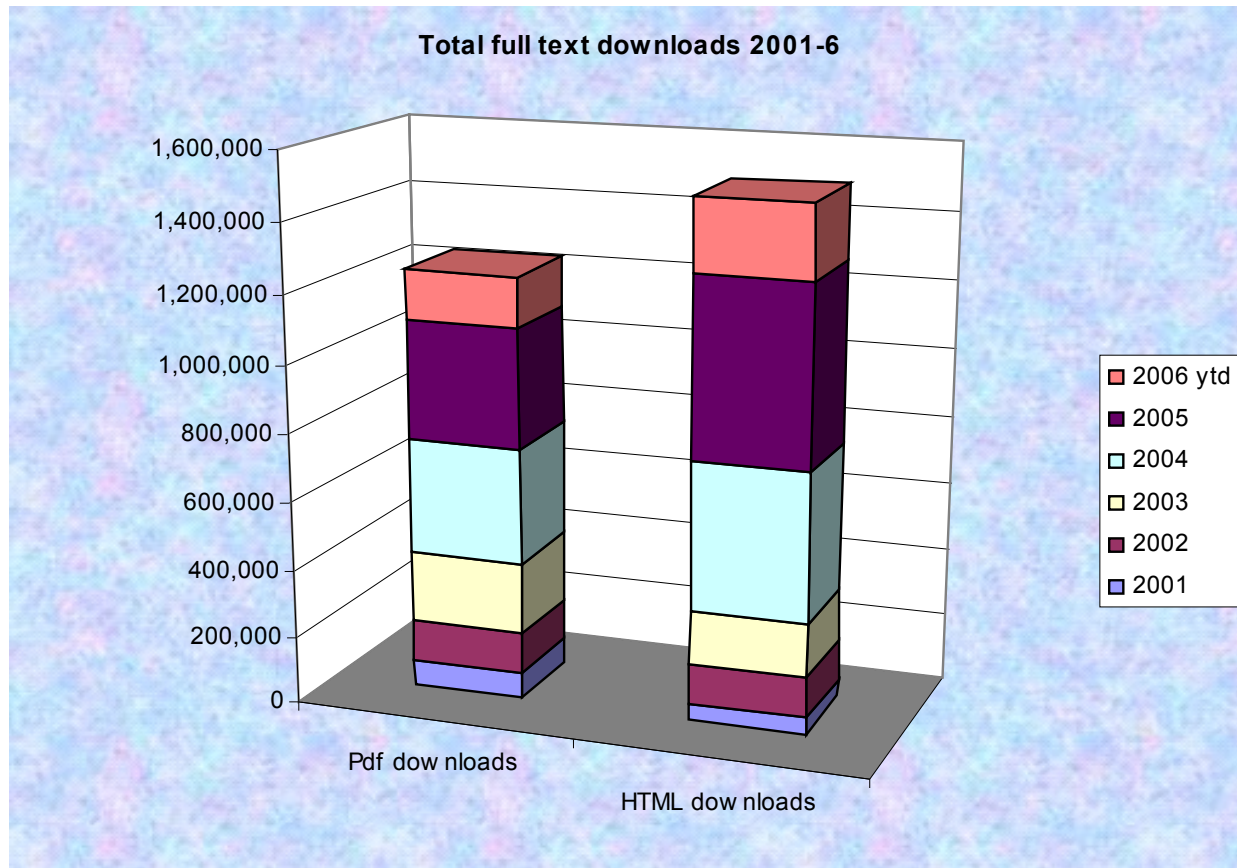
	2005				To 30 th June 2006			
	Outright Rejections			Rejected with Review	Outright Rejections			Rejected with Review
	Number	% (N) of area submissions		Number (%)	Number	% (N) of area submissions		Number (%)
Europe	256	68%	(378)	64 (17%)	121	65%	(186)	9 (5%)
North America	104	57%	(182)	39 (21%)	75	66%	(113)	6(5%)
Asia & Middle East	92	72%	(127)	19(15%)	59	81%	(73)	3 (4%)
Africa	14	56%	(25)	7(28%)	4	50%	(8)	0 (0%)
Australasia	37	62%	(60)	7(12%)	19	83%	(23)	2 (10%)
Central & Southern America	22	76%	(29)	3 (10%)	12	80%	(15)	1 (7%)



PDF full text downloads from web by year, 2001-6



Total full text downloads from web by year, 2001-6



Institutes with access to IJE by mode of access

